

Rennes Atalante Ker Lann



A site to set up companies of **mechanics** and **production engineering** sectors or linked to **the study of human movement** in the heart of a technological campus of 4,800 students.

- > You wish to collaborate **with the research teams** of ENS Cachan or Institut Maupertuis ?
- > You look for a **stimulating technological site** near the production unit of PSA Peugeot Citroën ?
- > You look for a **landscaped area of quality** for your company ?



10,000 people work for the production site of top of the range cars of PSA Peugeot Citroën in Rennes.



On Rennes Atalante Ker Lann, the companies are located in an exceptional working environment.

Come to the site Rennes Atalante Ker Lann

At 5 minutes far from the airport, you will find:

- a **technological campus** of 4,800 students, close to a city of 60,000 students
- a **rapid prototyping and high speed machining** centre
- **material specification** equipment
- a **laser welding** test centre
- **business buildings** with premises to rent
- Emergys **incubator**
- **restaurants**
- **rental premises**
- **sports facilities**
- **halls to rent**
- a **bus route**
- a **station**

R&D laboratories, start-ups, service companies...

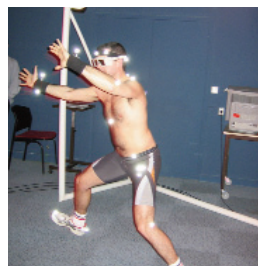
Make sure you're where the futur lies



- >>> The Rennes Atalante Association will help you to become part of the park's networks of companies and players in the research sector: invitations to conferences, contacts with partners, listing in the park's directory and website....



The industrials can test new assembly process with the laser welding platform of the Institut Maupertuis.



ENS Cachan and the University of Rennes 2 study the human movement.



> 12 km from Rennes centre
 > 6 km from the beltway
 > 9 km from the train station
 > 3 km from the airport
 ■ Site delimitation

> You look for **premises or lands**, please contact:
 Rennes Métropole
 Tel. +33 (0)2 99 86 64 40
 or
 Conseil Général d'Ille-et-Vilaine
 Tel. +33 (0)2 99 02 20 54

> You wish to be in touch with the **economical and scientific players** of the area, or you have a **project to set-up your business**, please contact:
 Rennes Atalante
 Tel. +33 (0)2 99 12 73 73

Rennes Atalante Ker Lann

A **160 ha site** dedicated to innovative companies in the heart of a **technological campus** of 4,800 students

Higher education and research

- 1 Ensai (engineering school of information sciences)
- 2 Louis de Broglie - Ecam group (engineering college)
- 3 Institut Maupertuis (R&D centre for production engineering)
- 4 ENS Cachan - Brittany (institution of research and higher education)
- 5 Ecole des métiers de l'environnement (college specialized in environment)
- 6 AFPI (association for professional training in industry)
- 7 Faculté des Métiers (work-based training)
- 8 Iftic (ICT training institute)

Companies

- 9 AES Chemunex
- 10 Segula Automobile
- 11 Assystem France
- 12 Eichrom Europe
- 13 Eichrom Environment
- 14 Idra Environnement
- 15 Le Verre Fluoré
- 16 LR Beva
- 17 Solutions productives
- 18 Axe
- 19 Mémométal Technologies
- 20 Sacet

Equipments

- A A laser welding test centre
- B A rapid prototyping and high speed machining centre
- C Material specification equipment
- D Emergys incubator
- E Campus house
- F Restaurant
- G Business buildings
- H Sports equipments
- I Train station

Organisms

- a Performance 2010 association
- b Brittany production engineering cluster
- c French association for quality

Science park map



15 rue du Chêne Germain • 35510 Cesson Sévigné • France
 Tél. +33 (0)2 99 12 73 73 • Fax +33 (0)2 99 12 73 74
technopole@rennes-atalante.fr • www.rennes-atalante.com



Science Park of Rennes - Saint-Malo
 Member of International Association of Science Parks

